

## DINING FOR WOMEN MENTORS

Click [here](#) for more information about becoming a Mentor

### CAROLINAS REGION MENTORS



Tricia Malinowski  
[car6@diningforwomen.org](mailto:car6@diningforwomen.org)  
NC, Charlotte – 2



Marnie Walsh  
[car3@diningforwomen.org](mailto:car3@diningforwomen.org)  
NC, Fairview – 1

### CENTRAL REGION MENTORS



Mary Toneff  
[cent4@diningforwomen.org](mailto:cent4@diningforwomen.org)  
OH, Sylvania – 1



Kim Whetstone  
[cent5@diningforwomen.org](mailto:cent5@diningforwomen.org)  
OH, Sylvania – 2

### FLORIDA REGION MENTORS



Beth Palmer  
[fl5@diningforwomen.org](mailto:fl5@diningforwomen.org)  
FL, Bradenton – 1



Kay Yoder  
[fl4@diningforwomen.org](mailto:fl4@diningforwomen.org)  
FL, Brandenton - 1

### MIDWEST REGION MENTORS



Sophia de Brul  
[mw2@diningforwomen.org](mailto:mw2@diningforwomen.org)  
IL, Wilmette – 1



Mary Caroline Mitchell  
[mw3@diningforwomen.org](mailto:mw3@diningforwomen.org)  
IL, Springfield – 3



Jennifer O'Neil  
[mw1@diningforwomen.org](mailto:mw1@diningforwomen.org)  
IL, Evanston - 1

## MID-ATLANTIC REGION MENTORS



Shereen Arent  
[ma13@diningforwomen.org](mailto:ma13@diningforwomen.org)  
DC, Washington - 4



Dianne Blais  
[ma9@diningforwomen.org](mailto:ma9@diningforwomen.org)  
VA, Fairfax - 2



Elaine Butterfoss  
[ma10@diningforwomen.org](mailto:ma10@diningforwomen.org)  
DE, Wilmington - 3



Judy Christensen  
[ma3@diningforwomen.org](mailto:ma3@diningforwomen.org)  
DE, Newark - 1



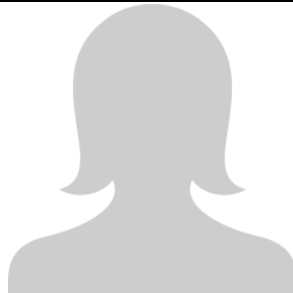
Sylvia Gentry  
[ma11@diningforwomen.org](mailto:ma11@diningforwomen.org)  
PA, Abington - 1



Brenda Mellon  
[ma15@diningforwomen.org](mailto:ma15@diningforwomen.org)  
PA, Pittsburgh - 1



Sylvie Meyers  
[ma7@diningforwomen.org](mailto:ma7@diningforwomen.org)  
NJ, Passaic - 1



Rosemary McGee  
[ma5@diningforwomen.org](mailto:ma5@diningforwomen.org)  
PA, Abington - 1



Laurie Stroope  
[ma16@diningforwomen.org](mailto:ma16@diningforwomen.org)  
MD, Baltimore - 3



Betsy Teutsch  
[ma12@diningforwomen.org](mailto:ma12@diningforwomen.org)  
PA, Philadelphia - 4

## NORTHEAST REGION MENTORS



Michele Krieg Bauer  
[ne9@diningforwomen.org](mailto:ne9@diningforwomen.org)  
MA, Pittsfield - 1



Ruth Bates  
[ne2@diningforwomen.org](mailto:ne2@diningforwomen.org)  
NY, Manlius - 1



Beth Hamilton  
[ne10@diningforwomen.org](mailto:ne10@diningforwomen.org)  
MA, Burlington - 1



Barbara Quine-Moran  
[ne6@diningforwomen.org](mailto:ne6@diningforwomen.org)  
NY, Rochester - 1



Barbara Myers  
[ne5@diningforwomen.org](mailto:ne5@diningforwomen.org)  
CT, Newtown - 1



Jan Zimmer  
[ne9@diningforwomen.org](mailto:ne9@diningforwomen.org)  
MA, Pittsfield - 1

## NORTHWEST REGION MENTORS



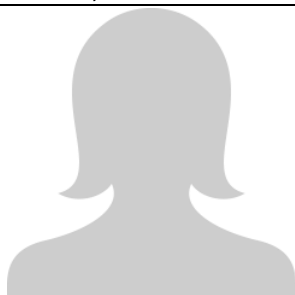
Lynn Kellogg  
[nw7@diningforwomen.org](mailto:nw7@diningforwomen.org)  
OR, Gold Hill - 1



Jane Newby  
[nw12@diningforwomen.org](mailto:nw12@diningforwomen.org)  
ID, Boise - 1



Tami Savage  
[nw10@diningforwomen.org](mailto:nw10@diningforwomen.org)  
ID, Hayden - 1



Kathy Young  
[nw4@diningforwomen.org](mailto:nw4@diningforwomen.org)  
WA, Ferndale - 1

## ROCKY MOUNTAIN REGION MENTOR



Thora Pabst

[rm3@diningforwomen.org](mailto:rm3@diningforwomen.org)

CO, Greeley - 1

## SOUTHEAST REGION MENTORS



Linda Bodine

[se4@diningforwomen.org](mailto:se4@diningforwomen.org)

AL, Dadeville - 1



Jen Walters

[se3@diningforwomen.org](mailto:se3@diningforwomen.org)

GA, Cumming - 1

## WEST REGION MENTORS



Laura Burnett

[west9@diningforwomen.org](mailto:west9@diningforwomen.org)

CA, Ventura - 1



Diane Glaser

[west7@diningforwomen.org](mailto:west7@diningforwomen.org)

CA, Shell Beach - 1



Deborah Hirsch

[west11@diningforwomen.org](mailto:west11@diningforwomen.org)

CA, Solana Beach - 1



Julie Kassan

[west12@diningforwomen.org](mailto:west12@diningforwomen.org)

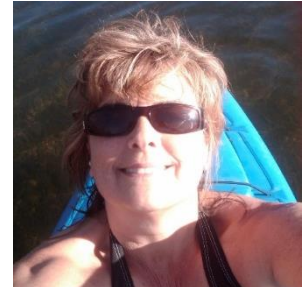
CA, Agoura - 2



Stephanie LaCount

[west13@diningforwomen.org](mailto:west13@diningforwomen.org)

CA, San Ramon - 1



Ingrid Rosten

[west10@diningforwomen.org](mailto:west10@diningforwomen.org)

CA, Rancho Cordova - 1



Cynthia Sawtell

[west6@diningforwomen.org](mailto:west6@diningforwomen.org)

CA, San Anselmo - 1